



MW MINERVAWORKSSM

TECHNOLOGY CONSULTING

We provide technology assessment, architecture and transformation services to help clients bring their technology platforms up to date, as well as ongoing platform management.

Building Technology Solutions Since 1986

Prepared for:

info@MinervaWorks.com ■ www.MinervaWorks.com ■ 2019 by MinervaWorksSM LLC * All Rights Reserved



Contents

- 1 Centers of Excellence
- 2 Flexible Technology Consulting
- 3 Reference Architecture
- 4 Systems & Technology Partners
- 5 Market Expertise & Representative Clients
- 6 “The Brick” Technology Probe
- 7 Points of Difference
- 8 Commitment of Clients / Community



Centers of Excellence

Owner Issues

Technology Problems

➡ Network Security & Privacy | Infrastructure Management | Emerging Technologies | Mobile Computing

Application Performance

➡ Quality of End-User Experience | Service Level Management | Web Services | Virtualization & Cloud Monitoring | Apps | Databases

Business Alignment

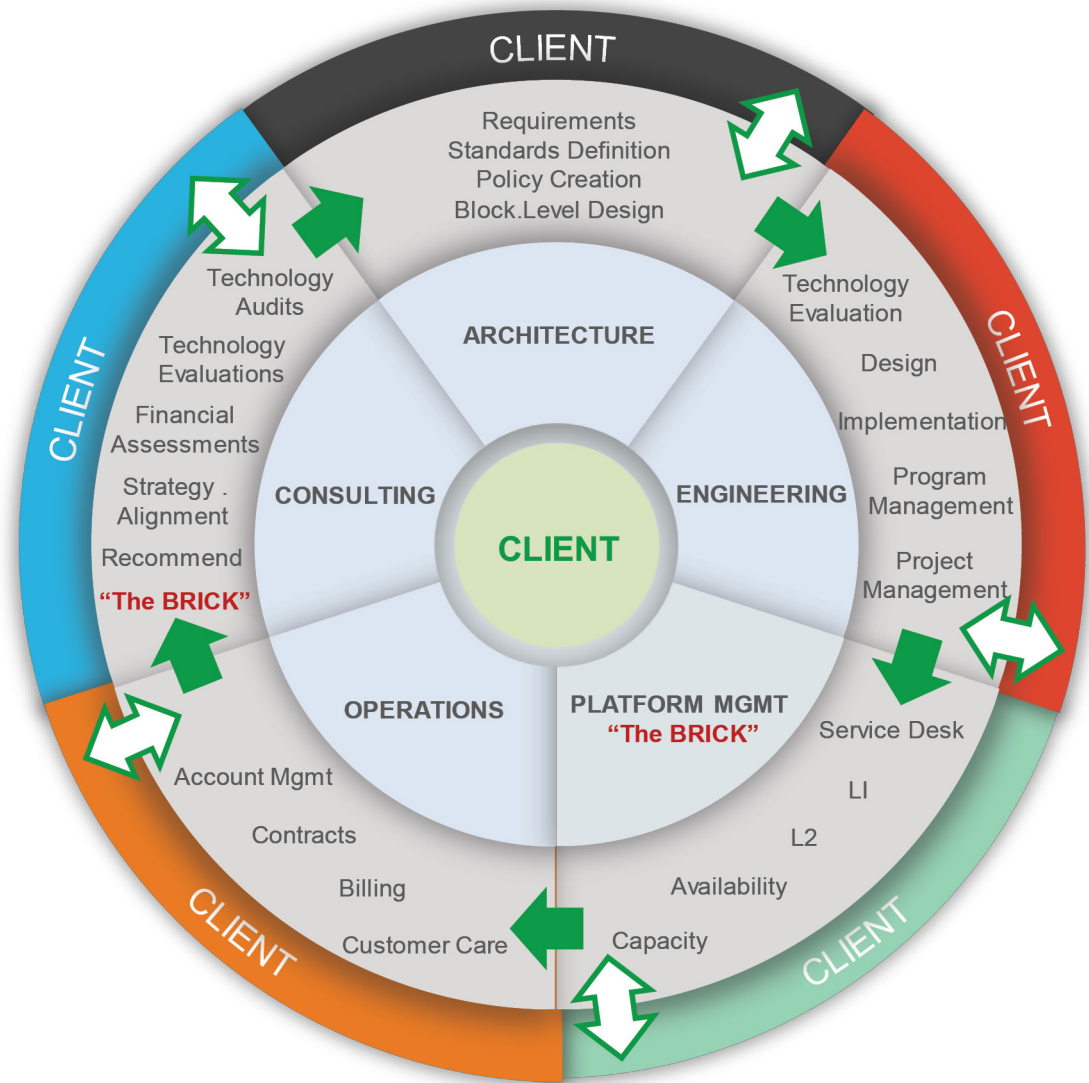
➡ Poor Communication | Lack of Technology | Mis-Aligned KPI's | Lack of Financial Commitment

Regulatory & Compliance

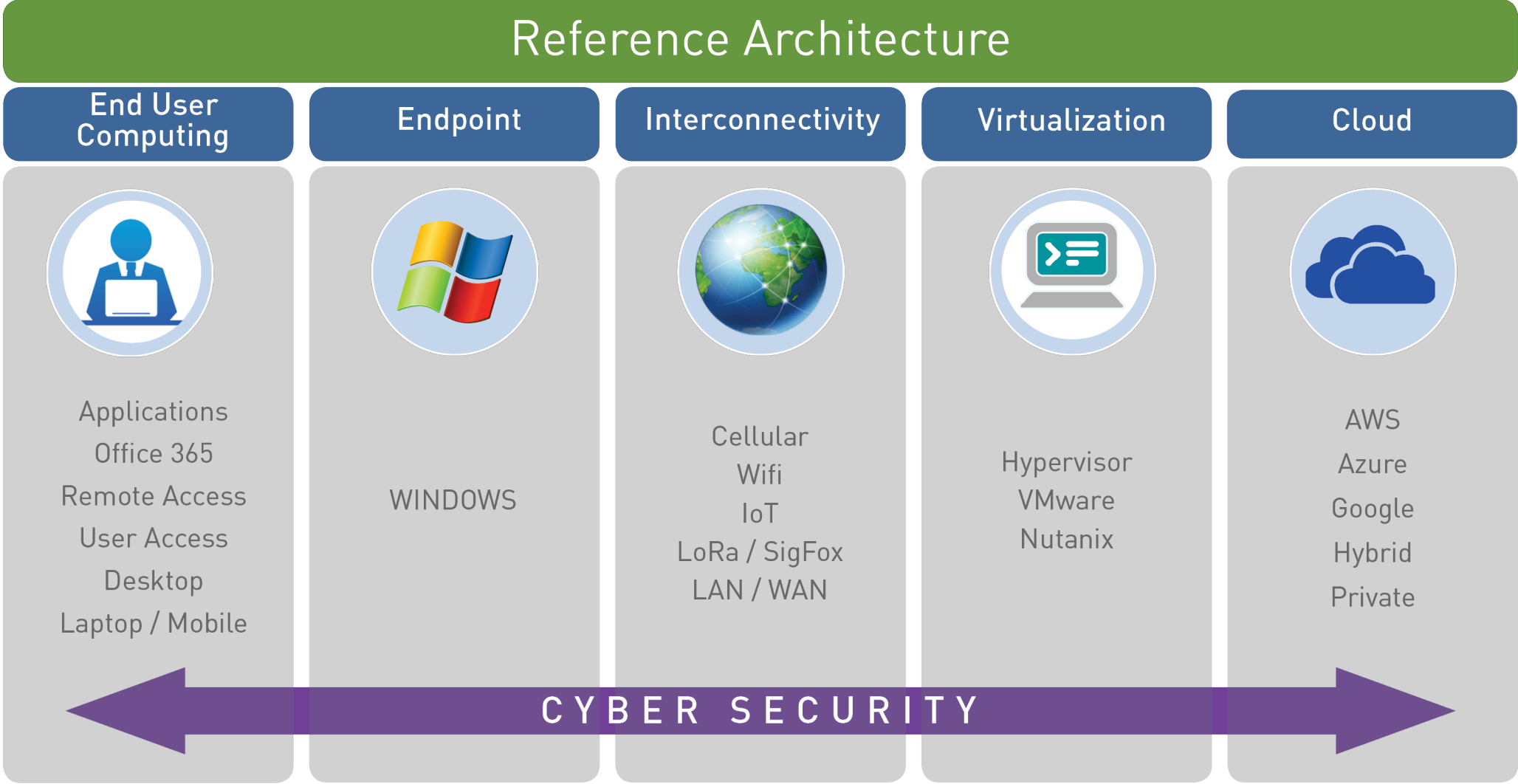
➡ Software Licensing | General Data Protection Regulations | Software Management | Market Focused Compliance | Appropriate Policies | General Data | eDiscovery | ISO 27001 | HIPPA | PCI | FDCA



Flexible Technology Consulting

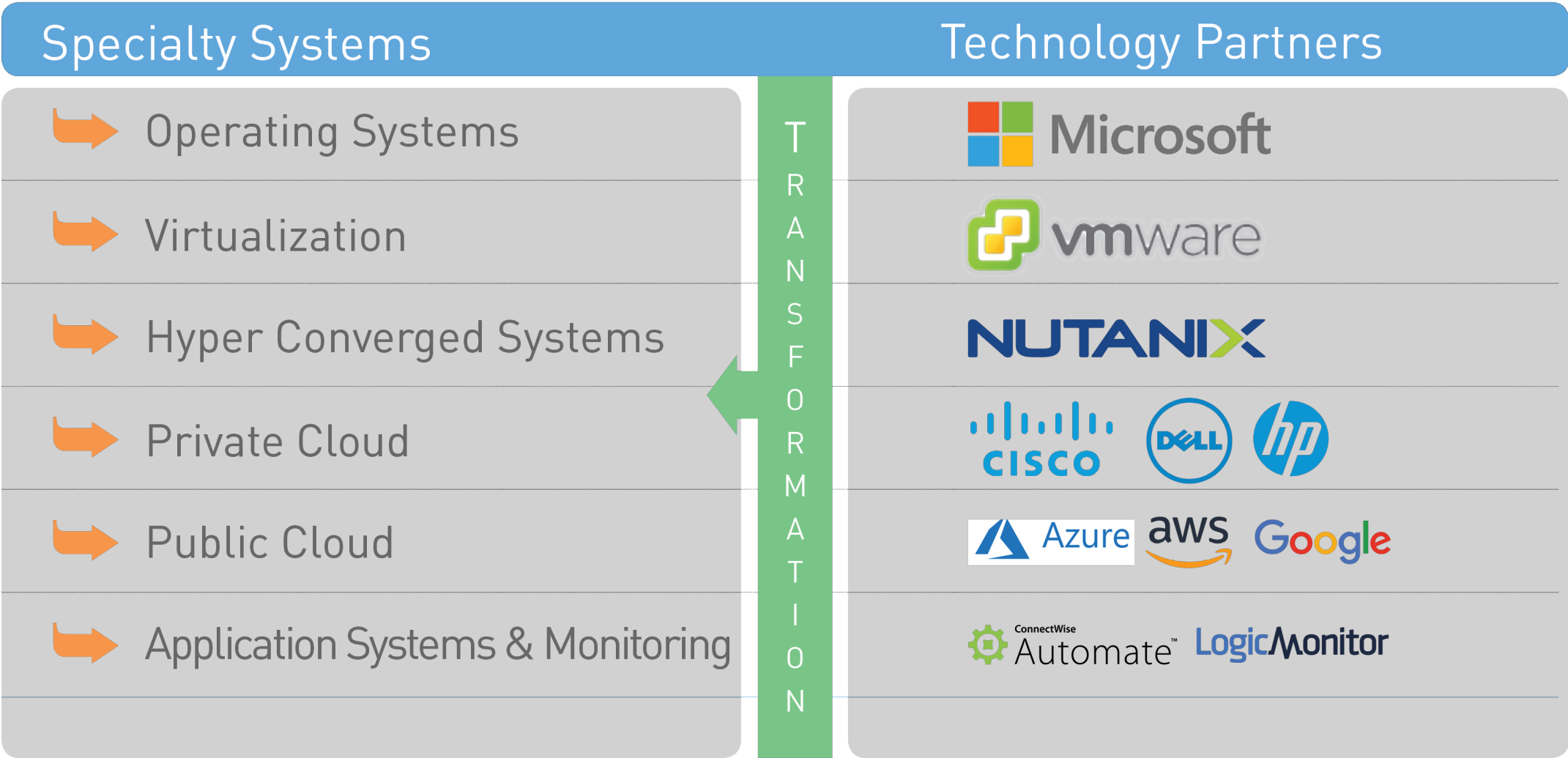


Reference Architecture















Systems & Technology Partners



Market Expertise & Representative Clients

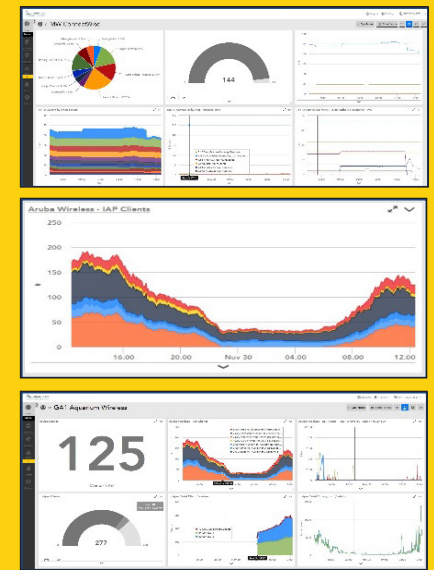
Market Expertise	Representative Clients
➡ Manufacturing	FOUNDATION Geotextiles, LLC
➡ Medical	 
➡ Financial Services	
➡ Gaming	 
➡ Hospitality & Entertainment	  
➡ Legal	 

“The Brick” Technology Probe *by* MinervaWorks

Do you know if you have ... ???

- ➔ Missing IT Assets
- ➔ Mis-Use of your IT Assets
- ➔ Paying for Unauthorized Software Licenses
- ➔ Data Leaks
- ➔ Security Vulnerabilities
- ➔ Rogue Devices on your Network
- ➔ Unauthorized Access to your Networks
- ➔ On-Going Platform Performance Metrics
- ➔ Updates in Real Time ...
 Perspective, Awareness, Insight, Audit
- ➔ Operational Profiles ... Usage, Behaviors,
 Time of Day Issues, IT Staff Accountability
- ➔ Slow Reactions with Solutions to your IT Problems ...
 Minutes to Hours - Not Days or Weeks
- ➔ Real-Time Complete Audit of your Assets

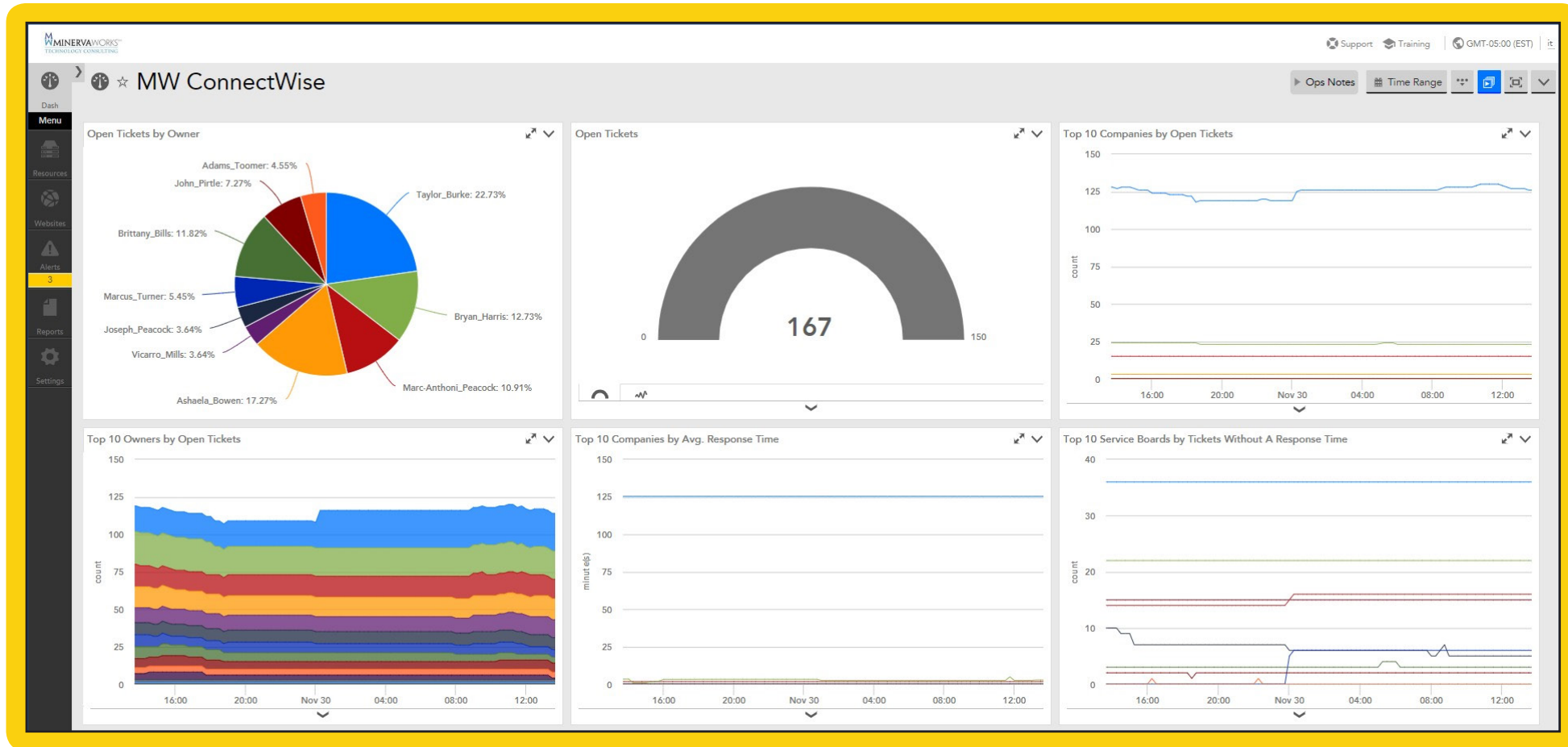
What does “The Brick” know about your
IT Assets ... **EVERYTHING!**



You can learn all this from a **MinervaWorks**
IT Accountability Audit ... AT NO COST!

6 “The Brick” Technology Probe

- Monitoring of Open Tickets Distribution -



6 "The Brick" Technology Probe

- Monitoring of Client Wireless Activity -



6

“The Brick” Technology Probe

- Monitoring of Client Voice Services -



6 “The Brick” Technology Probe

- Monitoring of Client Network -

The screenshot displays the MinervaWorks interface for the GA1 Aquarium Network. The top navigation bar includes links for Support, Training, and the current time (GMT-05:00 (EST)). The main content area is divided into two sections: 'Network Alerts' and 'Network Devices Status'.

Network Alerts: This section shows a green checkmark icon and the text 'No Alerts', indicating that there are no active network alerts.

Network Devices Status: This section displays a table of network devices and their IP addresses. The table is organized into six columns, each representing a different type of device (Barracuda Webfilter, IDF06-SW01, IDF12-SW01, IDF18-SW01, MDF01-SW01, and TRL01-SW01).

GA1-Barracuda Webfilter - 10.10.40.1	GA1-IDF06-SW01 - 10.10.40.14	GA1-IDF12-SW01 - 10.10.40.21	GA1-IDF18-SW01 - 10.10.64.127	GA1-MDF01-SW01 - 10.10.40.2	GA1-TRL01-SW01 - 10.10.64.118
✓ GA1-IDF01-SW01 - 10.10.40.9	✓ GA1-IDF07-SW01 - 10.10.40.19	✓ GA1-IDF13-SW01 - 10.10.40.22	✓ GA1-IDF19-SW01 - 10.10.64.124	✓ GA1-MDF01-SW02 - 10.10.40.3	✓ GA1-TRL01-SW02 - 10.10.64.122
✓ GA1-IDF02-SW01 - 10.10.40.10	✓ GA1-IDF08-SW01 - 10.10.40.16	✓ GA1-IDF14-SW01 - 10.10.40.24	✓ GA1-MDF01-Dell-iSCSI - 10.10.40.1	✓ GA1-MDF01-SW03 - 10.10.40.7	✓ GA1-TRL02-SW01 - 10.10.64.119
✓ GA1-IDF03-SW01 - 10.10.40.11	✓ GA1-IDF09-SW01 - 10.10.40.18	✓ GA1-IDF16-SW01 - 10.10.40.27	✓ GA1-MDF01-FW01 - 10.10.19.1	✓ GA1-MDF01-SW04 - 10.10.40.8	✓ GA1-TRL03-SW01 - 10.10.64.120
✓ GA1-IDF04-SW01 - 10.10.40.12	✓ GA1-IDF10-SW01 - 10.10.40.15	✓ GA1-IDF17-SW01 - 10.10.64.117	✓ GA1-MDF01-FW02 - 10.0.0.150	✓ GA1-MDF01-SW05 - 10.10.40.25	✓ GA1-TRL03-SW02 - 10.10.64.121
✓ GA1-IDF05-SW01 - 10.10.40.13	✓ GA1-IDF11-SW01 - 10.10.40.17	✓ GA1-IDF17-SW02 - 10.10.64.123	✓ GA1-MDF01-RTR01 - 74.255.42.3	✓ GA1-MDF01-SW06 - 10.10.40.26	



Points of Difference

- Proprietary monitoring application
 - “The Brick” technology probe
- Personal/Client information protection
- Resolves issues the monitoring application uncovers
- Establish corporate protocols for IT sustainability
- Cyber security services
- Compliance consulting
- Technicians assigned to your account
- Automation does not replace the fact we are in the People Business
- Align our service delivery with the client’s equipment and technology
- Cutting IT costs related to staff recruitment, training, payroll, benefits and management
- Removes the “fuzzy” edge of traditional MSPs
 - Specialize in what is important to clients
 - Regulatory compliance, applications, hardware solutions, security systems, niche verticals, cyber security, strategic consultancy
- In-house NOC ... not outsourced to third parties
- Deliver positive results within days of engagement
- Flexible technology consulting
- In-house diversity program
- Utilize diversity suppliers

Commitment of Clients / Community

- ➡ Our culture is one of excellence and delivering what our clients require
- ➡ We're not an organization that delivers technology for technology's sake, but only for business value
- ➡ We listen carefully to our Clients, our Subject Matter Experts and our Technology Partners
- ➡ We craft effective solutions through a high-touch collaboration methodology
- ➡ Teamwork is a core competency at MinervaWorks
- ➡ Professional Organization - Active Members: PMI, ITSMF, ISACA, Uptime Institute
- ➡ Active University Relationships - Georgia Tech, Georgia State, Kennesaw State
- ➡ Active Intern Program - Currently have 4 intern students employed
- ➡ Engage in various Sponsorship Programs with our client based network
- ➡ Aligned to quality components embedded into Agile & Lean development methodologies
- ➡ 32 year history of delivering technical solutions and support to our clients
- ➡ Utilizes a flexible approach to services, allowing the client to enter and exit at various points in the transformational and operational programs. Some clients begin at assessments while others begin with pressing operational issues. In all cases, MinervaWorks complements the client's needs, aligning with the client's resources to provide the appropriate outcome



Next Steps...



MinervaWorks Technology Consulting will provide a complimentary assessment & audit of your current IT infrastructure.

With MinervaWorks' proprietary application...

“The Brick” Technology Probe, we will provide you with the answer to “not knowing what you don’t know” about your technology platforms!